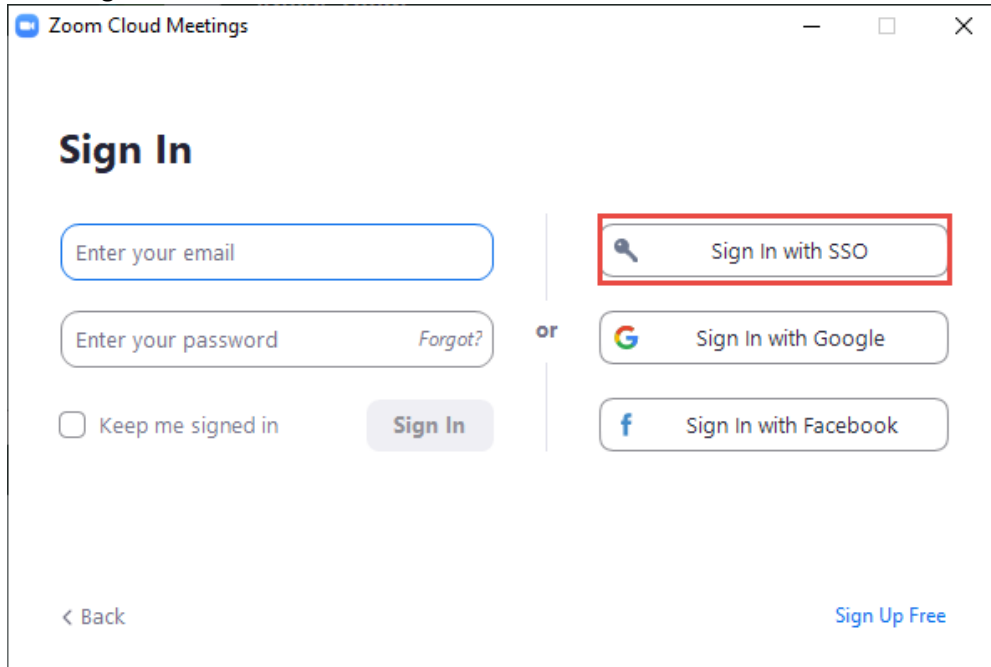


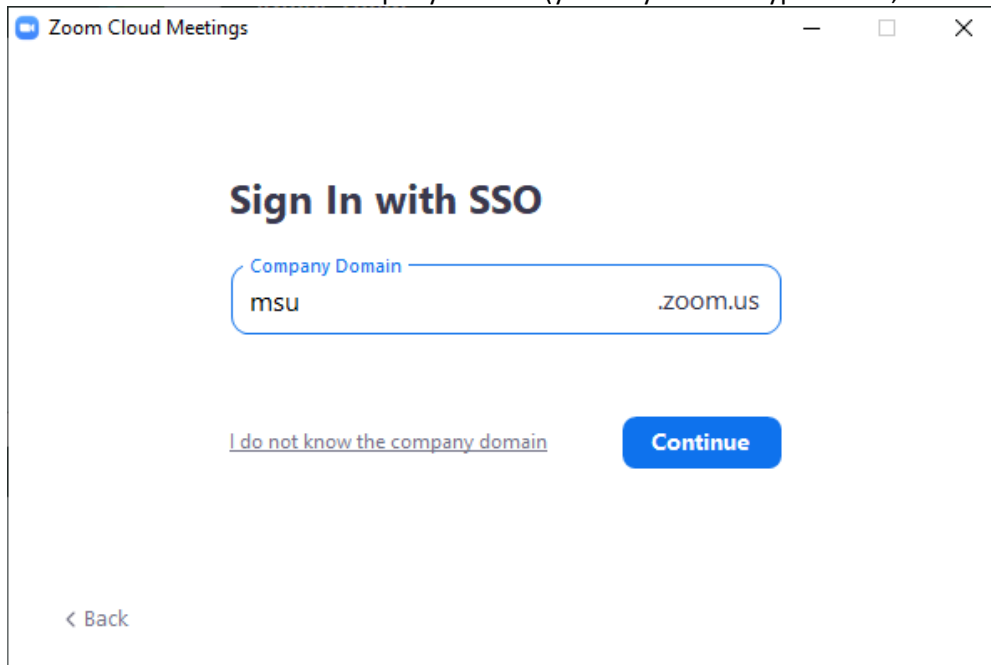
# Signing in to Zoom:

## Zoom Desktop Client

1. Open the Zoom App on your computer (If you don't have the Zoom App installed, you can download it from <https://zoom.us/download>)
2. Click "Sign In with SSO."



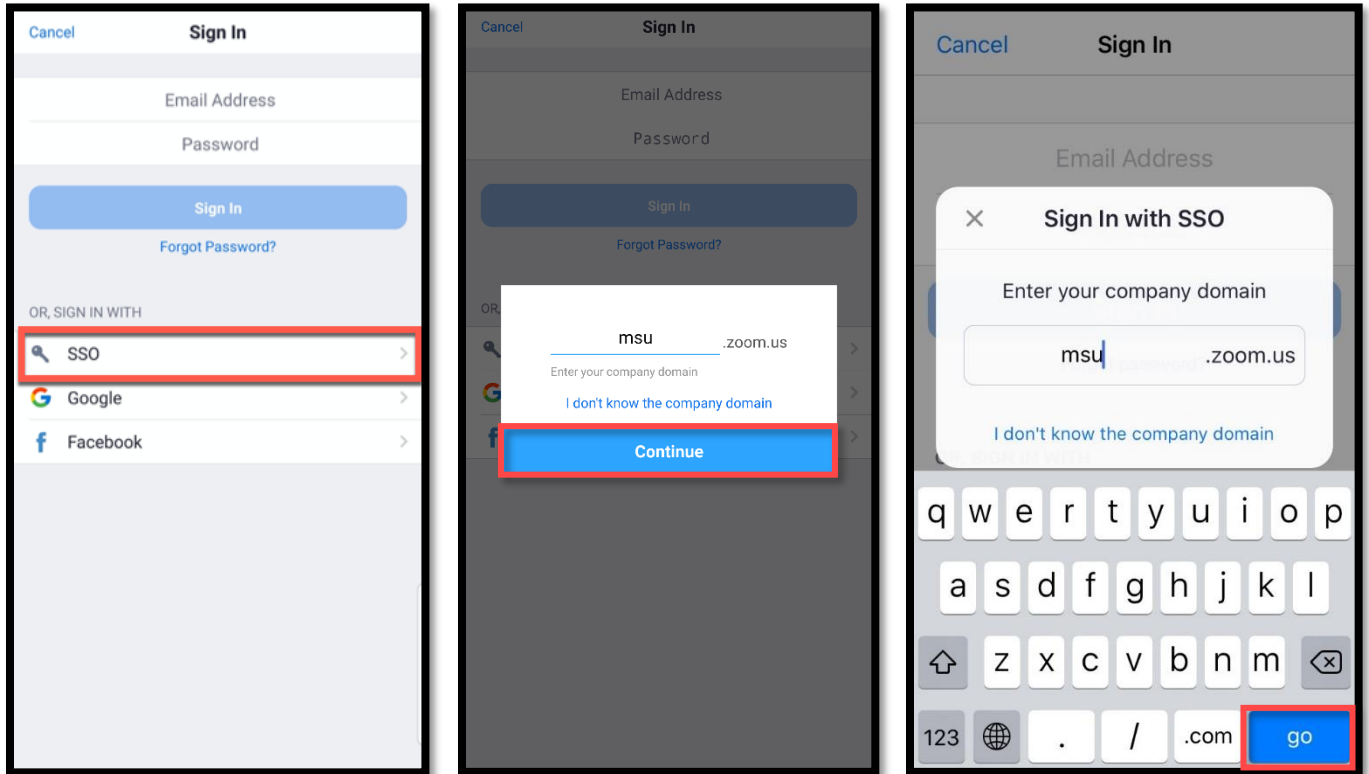
3. Enter msu.zoom.us for the company domain (you only have to type "msu", "zoom.us" is already pre-filled).



4. Click Continue - You will be redirected to MSU's single sign-on page to sign in. Sign in using your MSU credentials. If you are prompted by your browser to allow the Zoom app to open, do so.

## Zoom Mobile App

1. On the Sign In page, tap “SSO.”
2. Enter msu.zoom.us for the company domain (you only have to type “msu”, “zoom.us” is already pre-filled)



3. Tap **Continue (Android) or Go (iOS, on keyboard)** – You will be directed to a web browser and prompted to sign in with your MSU credentials. After signing in, you will be redirected back to the Zoom Mobile App.